

## How to connect a Projector to a Laptop or MacBook Pro

Normally a projector is connected to a laptop either by a VGA cable with a separate 3.5mm jack audio, or by HDMI either with integrated audio or with the separate 3.5mm jack audio cable.

The connector panel of the projector should look similar to the 3 examples below:



**Connect Projector with VGA**



Connect the VGA cable to the projector VGA in connector that should look like this:



The other end of the cable should plug into the VGA connector normally on the side of the laptop that look like:



Examples of laptops below:



Connect projector with HDMI





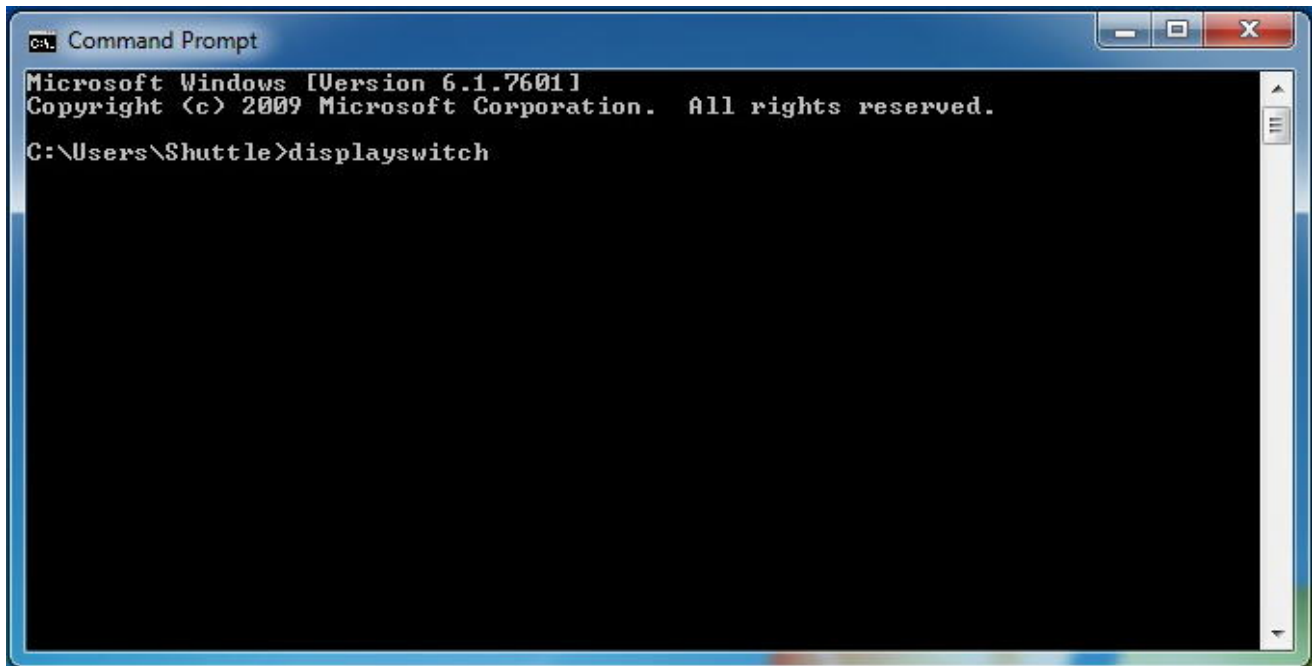
Connect the HDMI cable to the projector to the HDMI in connector which should look similar to:

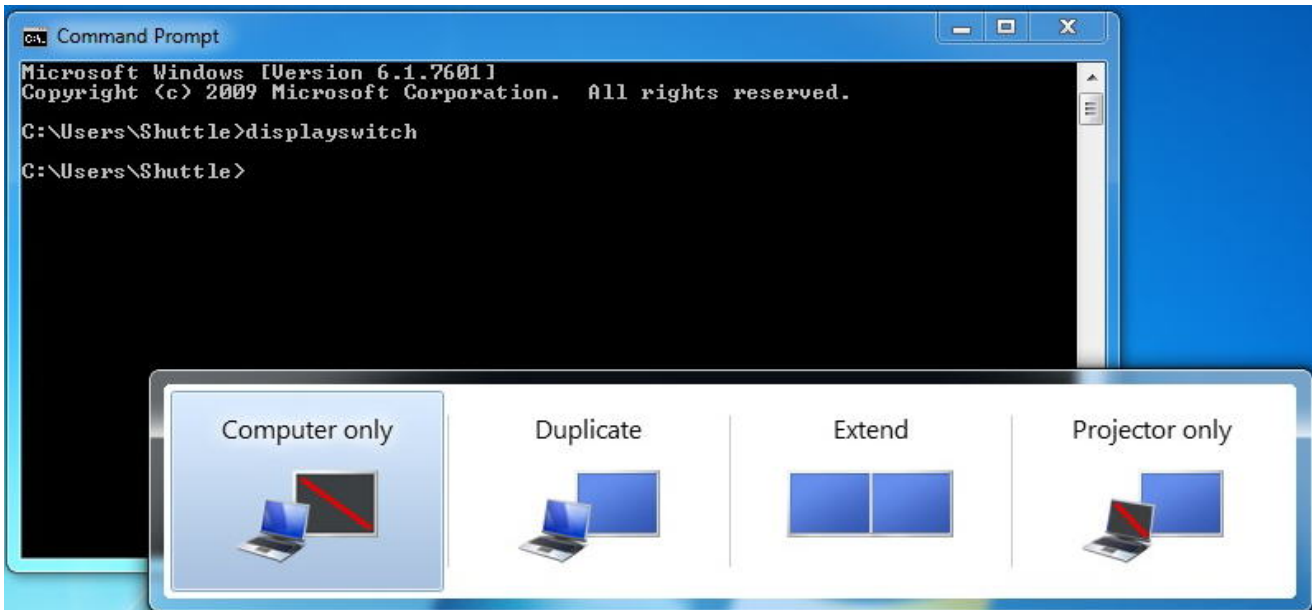


The other end of the HDMI cable should plug into the HDMI connector on the laptop.

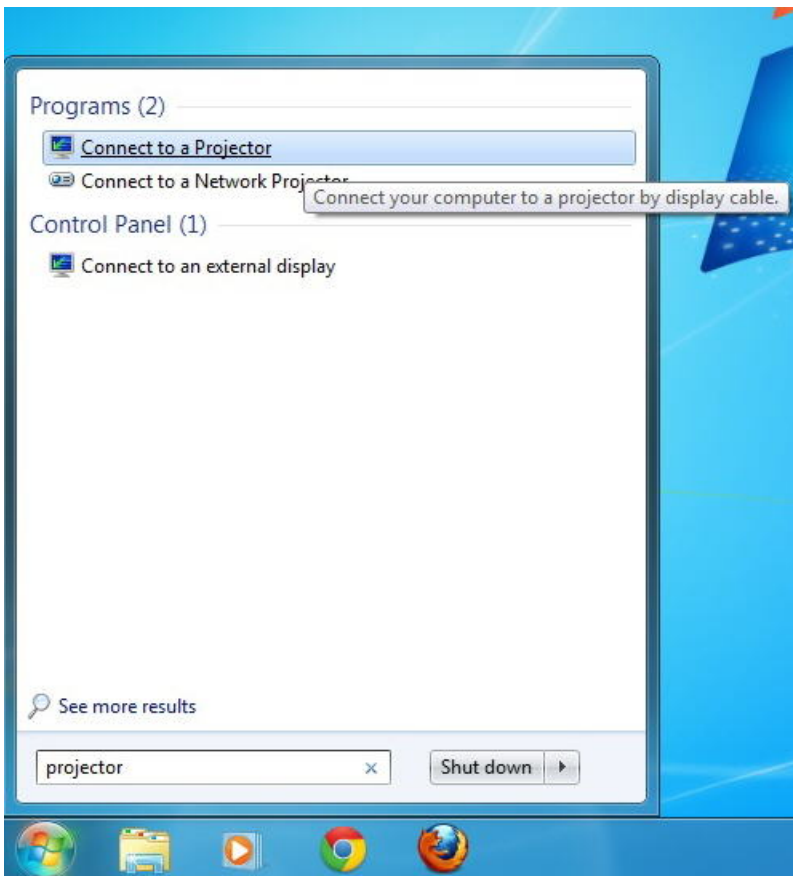
### Windows Setup

Some laptop and operating systems will automatically adjust the PC to output VGA or HDMI as well as the laptop screen. If this does not happen when running Windows 7 run the program “displayswitch.exe” either from the command prompt box:

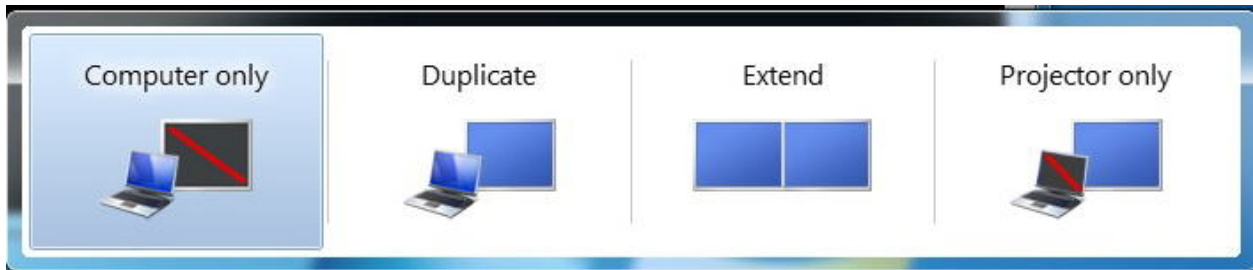




Or this application can be accessed by searching for projector.



Clicking the “Connect to a projector” also results in running the application:



Here the output can be set to Laptop only or Projector only, or clone mode or extend desktop mode.



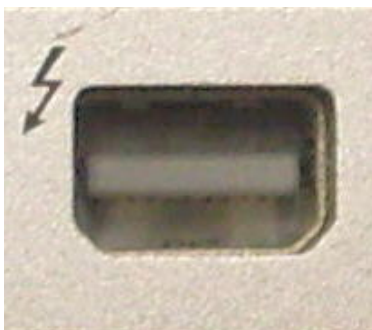
An alternative to changing the video output is pressing the function key on the keyboard at the same time as one of the function keys (exact key depends on make and model of laptop) that has a symbol similar to:



Pressing these keys should toggle between laptop screen only, screen and projector then projector only.

### Connect projector to Apple Computers

Most Apple computers have a connector called mini displayport which looks like:



A convertor cable can be provided to connect the Apple computer mini displayport to VGA, which looks like:



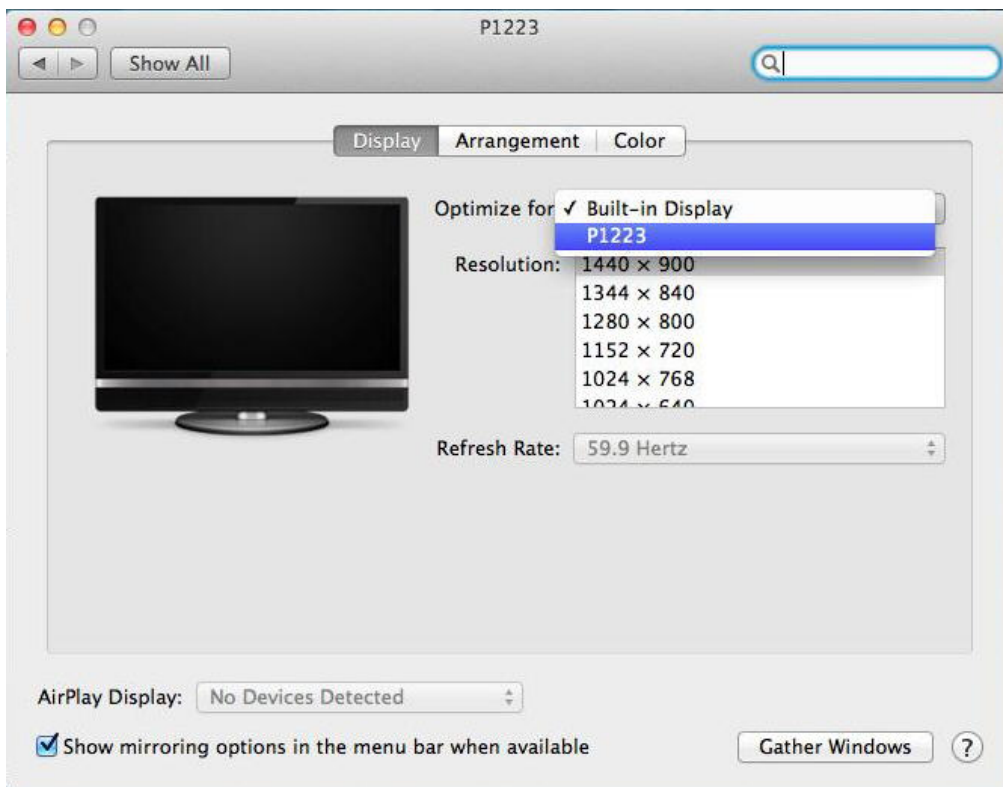
As this converts the signal to VGA the connection method to the projector is identical to connecting a VGA laptop to a projector.

Alternatively a mini displayport to HDMI cable can be used:



As this converts the signal to HDMI the connection method to the projector is identical to connecting a HDMI laptop to a projector.

To access Display settings start System Preferences and click on Displays.



From this panel the Apple can be optimized for the resolution of the projector or the resolution of the Macbook screen.



### **Connecting Audio to a projector**

Audio is normally taken from the audio out from the laptop or macbook on a 3.5mm jack and connected to the audio in on the projector on the same type of 3.5mm jack using the audio cable:

